

## Telsmith introduces new model to Hydra-Jaw series



The new H3244 Hydra-Jaw.

Telsmith, Inc. recently introduced the new H3244 Hydra-Jaw, the largest model to date within the Telsmith Hydra-Jaw™ Series. It is an advanced jaw crusher technology that offers lower operating costs, increased uptime and production capacity, streamlined operation and maintenance, and greater safety. Engineered with a true 32-inch (813 mm) gape and a 44-inch (1118 mm) width, the H3244 is designed to accept larger feed in hard rock quarry, and sand and gravel applications; and can be mounted on portable plants or modular fixed structure assemblies.

Behind the enhanced operational efficiencies of the new H3244 (and prior Hydra-Jaw models) is the incorporation of the unique Hydra-Jaw toggle, which provides hydraulic tramp iron relief with automatic reset, chamber clearing, and push-button setting adjustments. With fingertip operation in the control house or from a remote location, these innovative hydraulic systems eliminate costly downtime and prevent component damage, while also protecting workers from risks typically associated with clearing the crusher.

Enquiry: [sales@telsmith.com](mailto:sales@telsmith.com)

## Opening new application avenues with Rotocell

Rotocell, by Rotec, is a siliceous lightweight aggregate that opens up new product and application areas in lightweight concrete application. Because of its low density and high grain strength, this lightweight aggregate can be used to manufacture lightweight yet robust mineral materials. Since the final product properties are mainly determined by the characteristics of the lightweight aggregate, there are specific requirements for density, thermal conductivity, and other physical and chemical properties.

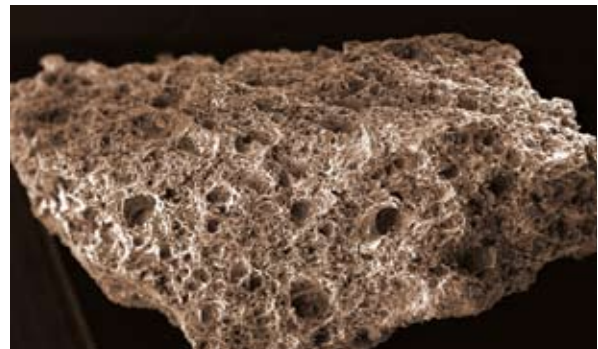
Rotocell demonstrates impressive results not only because of its advantageous product characteristics but also by virtue of its cost advantages over industrially produced lightweight fillers.

The two siliceous lightweight aggregates, ROTOCELL and ROTOCELL PLUS, combine key advantages. These positive attributes increase the respective end products and simplify the manufacturing and processing process decisively. Some of the advantages include:

- Very low dead weight
- High compressive strength
- Best thermal insulation
- Variable water intake

- High yield
- Optimum processing properties
- Stable long-term
- Excellent sound absorption
- Non-flammable
- 100 percent mineral
- Solvent-free
- Odourless
- 100 percent recyclable

Enquiry: [info@rotec-nature.de](mailto:info@rotec-nature.de)



The naturally derived, siliceous lightweight aggregate reveals its uniqueness under the microscope.